



#### FENCE TIES (STEEL) — 12 GA. CUT & HOOKED

Post Size - Tie Length	Item #	Sack Qty.	Case Qty.	Case Weight	Sack Price Ea.	Case Price Ea.
1 3/8" - 5 1/2"	WF3101	100	2000	38 lbs.	.12	.08
1 5/8" - 6 1/2"	WF3102	100	2000	39 lbs.	.12	.08
1 7/8" - 7 1/2"	WF3103	100	2000	40 lbs.	.14	.12
2 3/8" - 8 1/2"	WF3104	100	2000	45 lbs.	.14	.12
Barb Arms 12"	WF3105	100	1000	65 lbs.	.16	.14



#### FENCE TIES (STEEL) — 11 GA. CUT & HOOKED

1 5/8" - 6 1/2"	WF3106	100	2000	50 lbs.	.14	.12
1 7/8" - 7 1/2"	WF3107	100	2000	52 lbs.	.16	.14
2 3/8" - 8 1/2"	WF3108	100	2000	62 lbs.	.16	.14
2 7/8" - 9 1/2"	WF3109	100	1000	33 lbs.	.20	.16



#### FENCE TIES (STEEL) — 9 GA. CUT & HOOKED

1 5/8" - 6 1/2"	WF3110	100	1000	38 lbs.	.16	.14
1 7/8" - 7 1/2"	WF3111	100	1000	42 lbs.	.20	.16
2 3/8" - 8 1/2"	WF3112	100	1000	45 lbs.	.22	.20
2 7/8" - 9 1/2"	WF3113	100	1000	50 lbs.	.28	.22



#### ALUMINUM — 9 GA. CUT & HOOKED

1 7/8" - 6 1/2"	WF3114	100	3700	50 lbs.	.20	.16
2 3/8" - 8 1/4"	WF3115	100	3100	48 lbs.	.22	.20
2 7/8" - 9 1/4"	WF3116	100	2600	47 lbs.	.30	.26



#### ALUMINUM — 6 GA. CUT & HOOKED

1 5/8" - 6 1/4"	WF3117	100	2300	48 lbs.	•	•
2 3/8" - 8 1/4"	WF3118	100	1800	47 lbs.	•	•



#### STRAIGHT STEEL TIES

12 Ga. - 7"	WF3119	50	2850	50 lbs.	3.42	2.86
-------------	--------	----	------	---------	------	------

per lb.

#### HOG RINGS — STEEL

SIZE	Item #	Weight	Case Qty.	Sack Price/lb.	Case Price/lb.	Price Each
12 1/2 Ga.	WF3120	25 lbs.	5600	3.91	3.23	.08
9 Ga. BOE	WF3121	25 lbs.	2700	3.91	3.23	.12
10 Ga. #1	WF3122	25 lbs.	3300	3.44	2.86	Case Only
9 Ga.	WF3123	25 lbs.	2200	3.23	2.70	Case Only
9 Ga. Class III	WF3124	25 lbs.	2200	4.00	3.51	Case Only



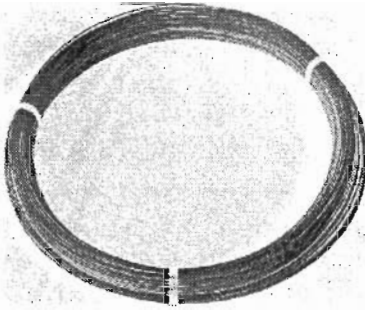
#### HOG RINGS — ALUMINUM

9 Ga.	WF3125	25 lbs.	6600	12.07	10.04	
-------	--------	---------	------	-------	-------	--





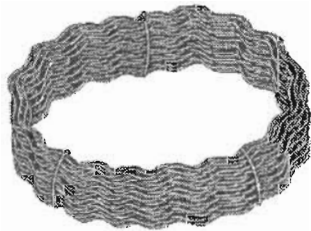
**GALVANIZED TENSION WIRE**



SIZE	Item #	Roll Weight	Feet Per Roll	Price Per pound	Price Per Foot
6 Ga.	WF3201	100 lbs.	1017	1.47	.35
7 Ga.	WF3202	100 lbs.	1197	1.47	.35
9 Ga.	WF3203	100 lbs.	1705	1.47	.25
10 Ga.	WF3204	100 lbs.	2057	1.47	.25
11 Ga.	WF3205	100 lbs.	2582	1.47	.25
12 Ga.	WF3206	100 lbs.	3369	1.47	.20
14 Ga.	WF3207	100 lbs.	5858	1.47	.20
18 Ga.	WF3208	100 lbs.	16620	1.92	.20

Sold in full rolls only

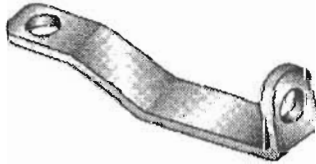
**7 GAUGE GALVANIZED COIL SPRING**



Zinc Coating				1.78	.41
Commercial	WF3209	100 lbs.	1000	2.09	Full Rolls Only
0.8 oz.	WF3210	100 lbs.	1000	2.38	Full Rolls Only
1.2 oz.	WF3211	100 lbs.	1000		

Sold in full rolls only

**TRUSS TIGHTENER**



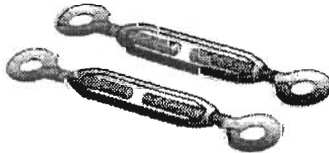
Size	ITEM #	Sack Qty.	Sack Weight	PRICE Less Sack	EACH Sack
Heavy	WF3212	50	35 lbs.	2.09	1.76
Pressed Steel	WF3213	50	12 lbs.	1.79	1.51

**TRUSS ROD THREADED WITH NUTS**



3/8" x 10 1/2'	WF3214	25	103 lbs.	7.11	5.93
3/8" x 12'	WF3215	25	115 lbs.	8.20	6.83

**TURNBUCKLE**

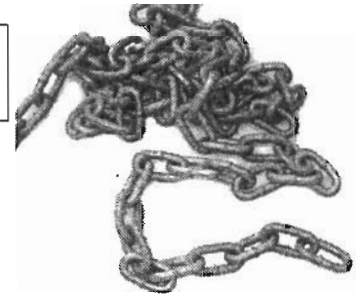


Alum. Body					
5/16" x 3 1/2"	WF3216	20	6 lbs.	4.78	3.89
Mal. Body					
3/8 x 6"	WF3217	20	10 lbs.	7.57	6.31



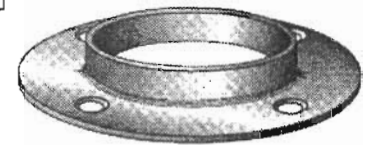
**GALVANIZED CHAIN — PROOF COIL, UNTESTED**

Size	ITEM #	Sack Qty.	Sack Weight	PRICE Less Sack	EACH Sack
3/16"	WF3301	250	100 lbs.	2.90	2.41
1/4"	WF3302	150	100 lbs.	4.84	4.02
5/16"	WF3303	100	100 lbs.	6.48	5.39



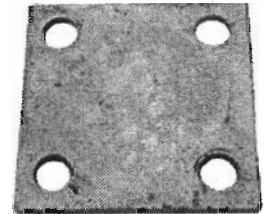
**ROUND FENCE POST FLANGE WITH FOUR 1/4" HOLES**

Size	ITEM #	Sack Qty.	Sack Weight	Less Sack Price Ea.	Sack Price Ea.
For 1 3/8" O.D.	WF3304	25	15 lbs.	8.67	7.21
For 1 5/8" O.D.	WF3305	25	16 lbs.	9.30	7.74
For 1 7/8" O.D.	WF3306	25	20 lbs.	13.48	11.23
For 2 3/8" O.D.	WF3307	25	24 lbs.	15.01	12.50



**FENCE POST FLANGE FLAT PLATE, GALVANIZED, 5/8" HOLES, 1/4" THICK**

6" x 6"	WF3308	25	64 lbs.	9.62	8.01
8" x 8"	WF3309	25	114 lbs.	14.37	11.96
3" x 6"	WF3310	25	32 lbs.	5.12	4.26



**SUPER SET QUICK CEMENT — 50 LB. PAIL**

Item #	1 - 9	Price Ea. 10 & Up
WF3311	56.15	46.79



Quick setting cement, sets fence in 30 minutes.



**REGULAR SECURITY (BTO) — SINGLE COIL**

BARBED TAPE OBSTACLE (BTO), STAINLESS STEEL,  
WITH GALVANIZED CORE WIRE



Single Helical Coil

SIZE	ITEM #	ROLLS PER BOX	ROLL WEIGHT	LESS BOX PRICE PER ROLL	BOX PRICE PER ROLL	PRICE PER FOOT
18" DIAMETER SINGLE COIL	WF3401	5	12 LBS	102.79	85.65	2.58
24" DIAMETER SINGLE COIL	WF3402	5	16 LBS	114.10	95.09	2.86



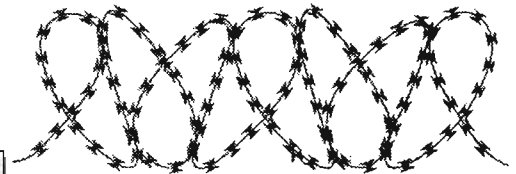
Standard Barb

Coverage: 50' per roll with 18" attachment spacing. Single coil is also available in 30" diameters

**MEDIUM SECURITY (BTO) — MAZE (CONCERTINA)**

REINFORCING MATERIAL .098 DIAMETER, GALVANIZED WIRE,  
CL III FIN 2, 76 BARBS, 3 CLIPS PER LOOP, 31 LOOPS PER ROLL

BARBED TAPE OBSTACLE (BTO), STAINLESS STEEL



Maze (Concertina)

SIZE	ITEM #	ROLLS PER BOX	ROLL WEIGHT	LESS BOX PRICE PER ROLL	BOX PRICE PER ROLL
24" DIAMETER CONCERTINA COIL	WF3403	4	17 LBS	129.72	108.11

Full Rolls Only

Coverage: 20' per roll with 16' attachment spacing, 3 clips, 31 loops

**HIGH SECURITY (BTO) — SUPERMAZE**

BARBED TAPE OBSTACLE (BTO), STAINLESS STEEL TAPE, WITH STAINLESS CORE WIRE,  
12" SPACING, 5 CLIPS PER LOOP, 51 LOOPS PER ROLL.

SIZE	ITEM #	ROLLS PER BOX	ROLL WEIGHT	LESS BOX PRICE PER ROLL	BOX PRICE PER ROLL
30" DIAMETER CONCERTINA COIL	WF3404	2	32 LBS	390.39	325.33

Coverage: 25' per roll with 12" attachment spacing, 5 clips, 51 loops.  
30" diameter high security is also available with galvanized core wire.

Double Coil (24" / 30") is available along with many other sizes & combinations.  
Send your specifications to our Huntington Park branch office.

**3275 E. Florence · Huntington Park, CA 90255 · 1.800.897.8208 · Fax 323.582.2016**  
visit our website at: [www.westernfence.com](http://www.westernfence.com)



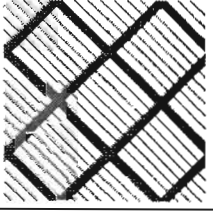
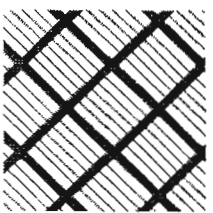
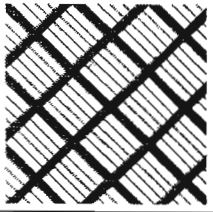
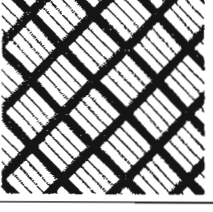
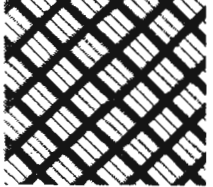


**ALUMINUM FENCE LATTICE**

**PRICED PER LINEAL FOOT**

1 7/8" Standard Picket Width

Pickets Required Per Lineal Foot

ITEM #	Fence Height	Picket Length	Price per Foot	Pickets Required Per Lineal Foot			
				Backgrnd.	Pattern	Total	
WF3601	3'	46"	4.51				1 in 8 Pattern
WF3602	4'	62"	4.90				
WF3603	5'	18"	5.44	3.64	1.04	4.68	
WF3604	6'	94"	9.06				
WF3605	7'	110"	7.17				
WF3606	8'	124"	7.90				
WF3607	3'	46"	4.58				
WF3608	4'	62"	4.97				
WF3609	5'	78"	5.59	3.54	1.20	4.74	
WF3610	7'	110"	6.12				
WF3611	6'	94"	7.30				
WF3612	8'	124"	7.70				
WF3613	3'	46"	4.64				
WF3614	4'	62"	5.01				
WF3615	5'	78"	5.67	3.45	1.40	4.85	
WF3616	7'	110"	6.20				
WF3617	6'	94"	7.37				
WF3618	8'	124"	8.24				
WF3619	3'	46"	4.97				
WF3620	4'	62"	5.28				
WF3621	5'	78"	6.06	3.32	1.66	4.98	
WF3622	6'	94"	6.52				
WF3623	7'	110"	7.60				
WF3624	8'	124"	8.38				
WF3625	3'	46"	5.05				
WF3626	4'	62"	5.44				
WF3627	5'	78"	6.20	3.12	2.08	5.20	
WF3628	6'	94"	6.60				
WF3629	7'	110"	7.75				
WF3630	8'	124"	8.78				

**SOLID COLORS:** White (20) – Desert Beige (50) – Desert Sand (45) – Forest Green (30) – Redwood (40)  
(Light) Blue (60) – Wood Grain (51) – Dark Brown (10) – Black (70) – Gray (90)

Special orders are non-returnable. Two color patterns are available.

**3275 E. Florence · Huntington Park, CA 90255 · 1.800.897.8208 · Fax 323.582.2016**  
visit our website at: [www.westernfence.com](http://www.westernfence.com)



### KUFLINK

DECORATIVE VERTICAL CHAIN LINK SLAT

1 Bag = 10 feet



- 8 STANDARD COLORS Kuflinks are available in: BROWN (10), TAN (50), REDWOOD (40), WHITE (20), GREEN (30), BLACK (70), GRAY (90), and BLUE (60).

ITEM #	FENCE HEIGHT	ACTUAL LENGTH	WEIGHT PER BAG (lbs)	PRICE PER BAG
61180	36'	32.5"	7.5	45.49
61181	42"	38.5"	8.75	53.29
61182	48'	44.5'	10	61.53
61183	60"	56.5	12.5	66.83
61184	72"	68.5'	15	80.25
61185	84'	80.5"	17.5	93.69
61186	96"	92.5"	20	107.24
61187	120"	116.5"	25	133.94
61188	144'	140.5"	30	154.84

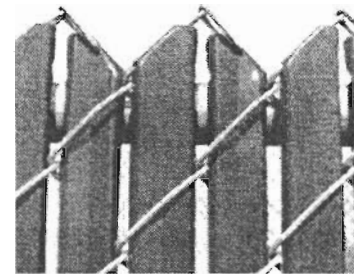
**New slat width**  
1-3/32" wide slat — fits both  
11 GA and 9 GA

#### PRODUCT SPECIFICATION

Tubular Kuflinks have a wall thickness of .030" ± .004". Actual cut length is 3 1/2" ± 1/4" shorter than height of chain link.  
15 Year limited warranty

### ALUMINUM VERTICAL PICKETS (Prepackaged: 10 Lineal Feet Per Box)

ITEM#	Fence Height	Picket Length	Price per Box
61201	3'	34"	31.75
61202	3 1/2'	40"	32.93
61203	4	46"	34.13
61204	5'	58"	38.81
61205	6'	70"	44.69
61206	7'	82"	51.74
61207	8'	94"	59.98



1 1/4" Picket Width/Sold in Box Quantity Only  
Patented Locking Tab at Top of Picket

AVAILABLE COLORS: White – Forest Groan – Pastel Green – Desert Sand – Eggshell – Desert Beige – Brown – Redwood.

### PLASTICLINK SLATS — 2 3/8" WIDE

Priced per foot of height – .40 per foot • 106 pieces =25 foot coverage

Item # 50348

### WOOD INSERTS — 5/16" x 1 1/8"

Fence Height	Item #	Price each
4'	16850	.60
5'	16851	.72
6'	16852	.83
7'	16853	•
8'	16854	1.23

Bundle Quantity is usually 85 Pieces per bundle = 10' coverage. Bundle quantity is subject to change. No broken bundles.



**WOOD SNOW FENCE**

Height	Item #	Description	Ft. Per Roll	Wt. Per Roll	Price Per Roll
4'	50316	Non stained FLAT TOP	50	74 lbs.	

Stained is also available. Call for quantity discounts.

**ALPI 4' — SAFETY & SNOW FENCING**

4'	44501	Orange-4'ALPI	100	28 lbs.	
----	-------	---------------	-----	---------	--

**BEACON PLUS — 4' AND 6' ECONOMICAL SAFETY FENCE**

4'	44513	Orange BEACON	50	9 lbs.	--
4'	44514	Orange BEACON	100	17 lbs.	
6'	44515	Orange BEACON	100	25 lbs.	

BEACON PLUS 6' IS SPECIAL ORDER

**DEBRIS NETTING — 100% HIGH DENSITY POLYETHYLENE NETTING**

4'	44550-10	Orange	150	15 lbs.	
----	----------	--------	-----	---------	--

- Heavy reinforced selvage edges top & bottom
- Versatile Fabric • Crowd control • Temporary sport field fencing

Other colors available: Red (15), Dark Green (20), Bright Blue (25)

**NORDIC - SNOW FENCE**

		Nordic II			
4'	44531	Orange - 4'	100	25 lbs.	•
4'	44531-10	Black - 4'	100	25 lbs.	•
		Nordic Plus II			
4'	44532	Orange - 4'	100	46 lbs.	
4'	44532-10	Black - 4'	100	46 lbs.	

**SENTRY SECURA — Safety Fence — Diamond Pattern**

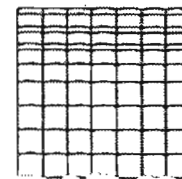
4'	44260	4' Orange Diamond Mesh	50	16 lbs.	
6'	44262	6' Orange Diamond Mesh	50	26 lbs.	

SENTRY SECURA IS ALSO AVAILABLE IN 5'

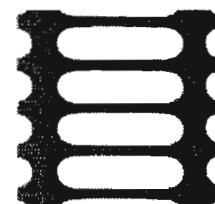
Mesh Designs



Aprox. Mesh Size  
ALPI - 3" x 1 1/2"  
BEACON - 3 1/2" x 1 1/2"



Netting



Mesh Size 4" x 1"



Mesh Size 1 3/4" x 2 1/8"





**WINDSCREENS FOR:**

Outdoor Tennis Courts  
Indoor Tennis Courts  
Baseball Fields  
Crowd Control

Gym Floors  
Yard Fences  
Overhead Shade  
Snow Fences

**POLYPROPYLENE**

ITEM # 60600-00

Open Mesh (#1230) available in 6', 9', 12' special heights on request

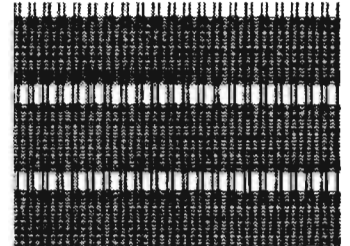
Color: Green, or Black

ITEM # 60601-00

Closed Mesh (#1231) available in 6, 9', 12' special heights on request

Color: Green, or Black

Characteristics: A light-weight material with less than 1% shrinkage, initial high tensile strength and the greatest abrasive resistance. Black color has extra long life due to greater ultraviolet resistance and can be used for shade.



PRICE

Quoted on Request

**VINYL**

ITEM # 60602-00

13-ounce (#1241) available in 5', 6', 7' 6", 9', 10, 12' or special heights.

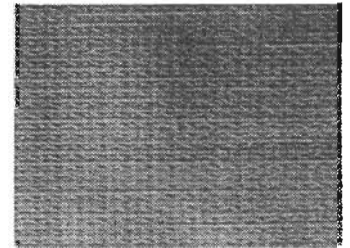
Color. Green or Black. (Special Heights Quoted Upon Request).

13-ounce (#1241) available in 6, 7' 6", 10',

Color: Gray. Blue, Brown, Beige, White

Characteristics: A solid opaque material giving privacy with sound-reflecting qualities. A deluxe fabric for indoor or outdoor courts and gym floors.

18-ounce also available—call for price and availability.



PRICE

Quoted on Request

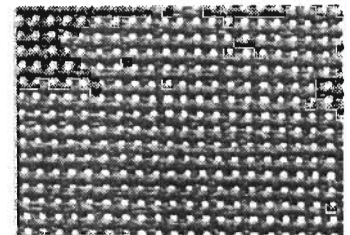
**POLYESTER**

ITEM # 60603-00

Open Weave Vinyl Coated Polyester (#1243) available in 6', 9', 12'.

Color: Green, or Brown

Characteristics: 3-ounce polyester coated with 4-ounce PVC. Very highly weather resistant with long life and color retention.



PRICE

Quoted on Request



**STANDARD FEATURES ON #1200 PRODUCTS**

Reinforced hems, brass grommets every foot, no special cutting price for gates, transoms, or short panels.

**OPTIONAL FEATURES ON #1200 PRODUCTS**

PRICE

ITEM # 80604-00

Reinforcing Tape (#1250) — A horizontal tape with grommets every foot is recommended for panels over 6' in height. Tape is centered.

ITEM #60805-00

Windholes (#1251) — Vents located in top half of panels every 10' on center.

- (a) Rectangular reinforced holes for polypropylene.
- (b) Circular reinforced holes for solid vinyl and polyester.

QUOTED  
UPON REQUEST

ITEM # 60606-00

Tabs (#1252) — A flap with grommets sewn on the back of panels.

**NETTING**

**#21 Knotted Netting (#1400) 1 3/4" on the square available in custom sizes.**

Binding grommets optional.

Color: (a) White, (b) Green, (c) Black

Characteristics: A versatile polyester treated netting for tennis courts.

**Barrler Netting (#1410) available in 25 x 150' and 6'6" x 150' bales.**

Color: Black

Characteristics: 1" mesh olefin fibers for use at golf courses, baseball fields, etc.

QUOTED  
UPON REQUEST

**#36 All Purpose Netting (#1420) available in custom sizes.**

Color: Black

Characteristics: Heavy-duty 1 7/8" square nylon weather-treated netting for baseball cages and all other athletic areas. Bound on all four sides with 1/4" polypropylene black rope.

**ATTACHING MATERIALS**

- #1500 No. 9 gauge steel hog rings
- #1501 Ringers for attaching hog rings
- #1502 S-hooks
- #1503 Poly-Vinyl coated steel wire rope for lacing
- #1504 3/16" galvanized steel aircraft cables
- #1505 Cable clamps
- #1506 Eye-bolts and nuts
- #1507 Bolt cutters
- #1508 Tie wraps — Plastic ties

QUOTED  
UPON REQUEST